

AHŞAP
TEKNOLOJİLERİ
TIMBER
TECHNOLOGIES

AHŞAP KORUMA

Önkoruma maddeleri fırça ile uygulanmaz !!!!



Önkorumadan gemiş ahşap elektrik diređi –

Hizmet ömrü 60 yıl



Mikolojik deneyler: önkoruma maddelerinin, ahşaba zarar veren mantarlara karşı etkinliğini ölçer



Arazi deneyleri: Önkorumadan gemiř ahřaplar araziye dikilip belirli süreler ile dayanıklılıkları test edilir.



Önkoruma maddelerinin, resmi laboratuvarlardan onay belgeleri bulunmalıdır

AMERICAN WOOD-PRESERVERS' ASSOCIATION STANDARD

(This Standard is promulgated according to a consensus procedure and is under the jurisdiction of AWPA Subcommittee P-4)

P5-05[®]

STANDARD FOR WATERBORNE PRESERVATIVES

Note: AWPA Standard P5-05 consists of six pages.

3. AMMONIACAL COPPER ZINC ARSENATE (ACZA) (Reaffirmed in 1995 and in 2002.)

3.1 Ammoniacal Copper Zinc Arsenate shall have the following composition:

Copper as CuO	50.0%
Zinc as ZnO	25.0%
Arsenic as As ₂ O ₃	25.0%

Subject to the tolerances listed in Paragraph 3.2.

The above shall be dissolved in a solution of ammonia (NH₃) in water. The weight of ammonia contained in a treating solution and obtained from ammonium hydroxide, shall be at least 1.38 times the weight of copper oxide. To aid in solution, it is also necessary that the treating solution contain ammonium bicarbonate (NH₄HCO₃) at least equal to 0.92 times the weight of copper oxide.

3.2 The composition of the preservative present in a treating solution may vary within the following limits:

	Min. % ^b	Max. % ^b
Copper as CuO	45.0	55.0
Zinc as ZnO	22.5	27.5
Arsenic as As ₂ O ₃	22.5	27.5

3.3 The treating solution shall contain bivalent copper, bivalent zinc and pentavalent arsenic derived from compounds in excess of 95 percent purity on an anhydrous basis. The commercial preservative shall be labeled as to its total content of active ingredients listed in Section 3.1.

Tests to establish conformity with the foregoing requirements shall be made in accordance with the standard methods of the American Wood-Preservers' Association. The valency state of the arsenic component of ACZA treating solutions shall be determined in accordance with section 12 of AWPA Standard A2, to ensure that the arsenic is a pentavalent form.

AMMONIACAL COPPER ARSENATE

TYPE A (Reaffirmed 1996, Amended 1998, Reaffirmed 2002)

DK 674.048.3/4 : 691.11 : 624.9 : 699.8	DEUTSCHE NORM	April 1990
Holzschutz Vorbeugender chemischer Holzschutz		DIN 68 800 Teil 3
Protection of timber; preventive chemical protection		Ersatz für Ausgabe 05.81 und für DIN 68 805/10.83

	Seite
1. Holz nach der Schutzbehandlung	5
2. Schutzbehandlung	6
3. Kennzeichnung	6
4. Schutz von nichttragendem nicht tragend ohne statische Funktion	7
5. Schutz von nichttragendem maß-	



PRODUIT DE TRAITEMENT PREVENTIF. USAGE PROFESSIONNEL.

SOCIETE : PROTIM SOLIGNUM Ltd
Produit : CELCURE AC-500
N° d'identification : 21-3431-40

Famille : Hydrosoluble

Nature : concentré

COMPOSITION
CELCURE AC-500 :
Chlorure de benzalkonium : 4,8
Hydroxycarbonate Cuivrique : 1
(Cuivre : 9,5 % m/m)
Acide borique : 5,0 % m/m

Caractéristiques

Point d'éclair
Densité : /

Application

Humidité du bois au moment du traitement : < 25 %

Procédés :

Classes	Procédés industriels
1	Autoclave vide et pression
2	Autoclave vide et pression
3 a	Autoclave vide et pression
3 b	Autoclave vide et pression
4 / SP	Autoclave vide et pression
5	/

Evaluation toxicité/écotoxicité



Certificate of Registration

QUALITY MANAGEMENT SYSTEM

This is to certify that:

Protim Solignum Ltd
Fieldhouse Lane
Marlow
SL7 1LS
United Kingdom

Holds Certificate No: FM 01724

and operates a Quality Management System which complies with the requirements of the following scope:

The design, manufacture and supply of wood preservatives, decorative and damp-proofing systems.



Health and Safety
Executive

WOOD PRESERVATIVES

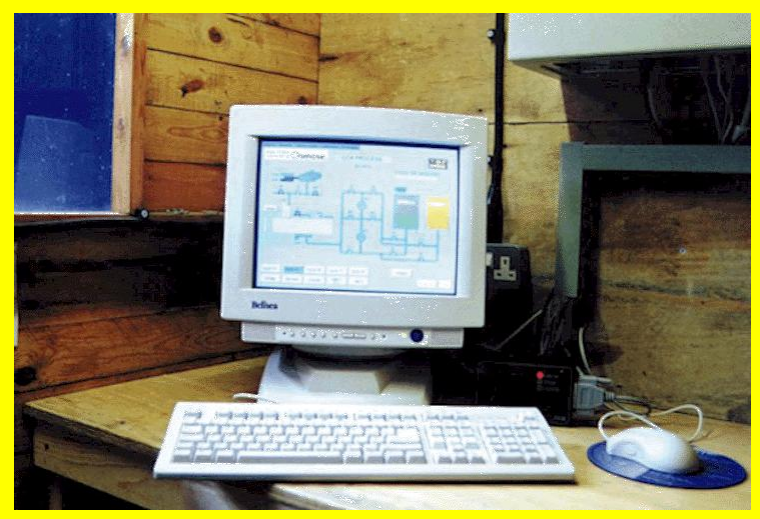
Table generated 30th April 2007

Products are listed below their active ingredients (which are given a code number and listed alphabetically). In addition, details of the marketing company, who can use

ÖNKORUMA TESİSİ



PREVAC ÖN KORUMA TESİSİ VE "WORKNET"

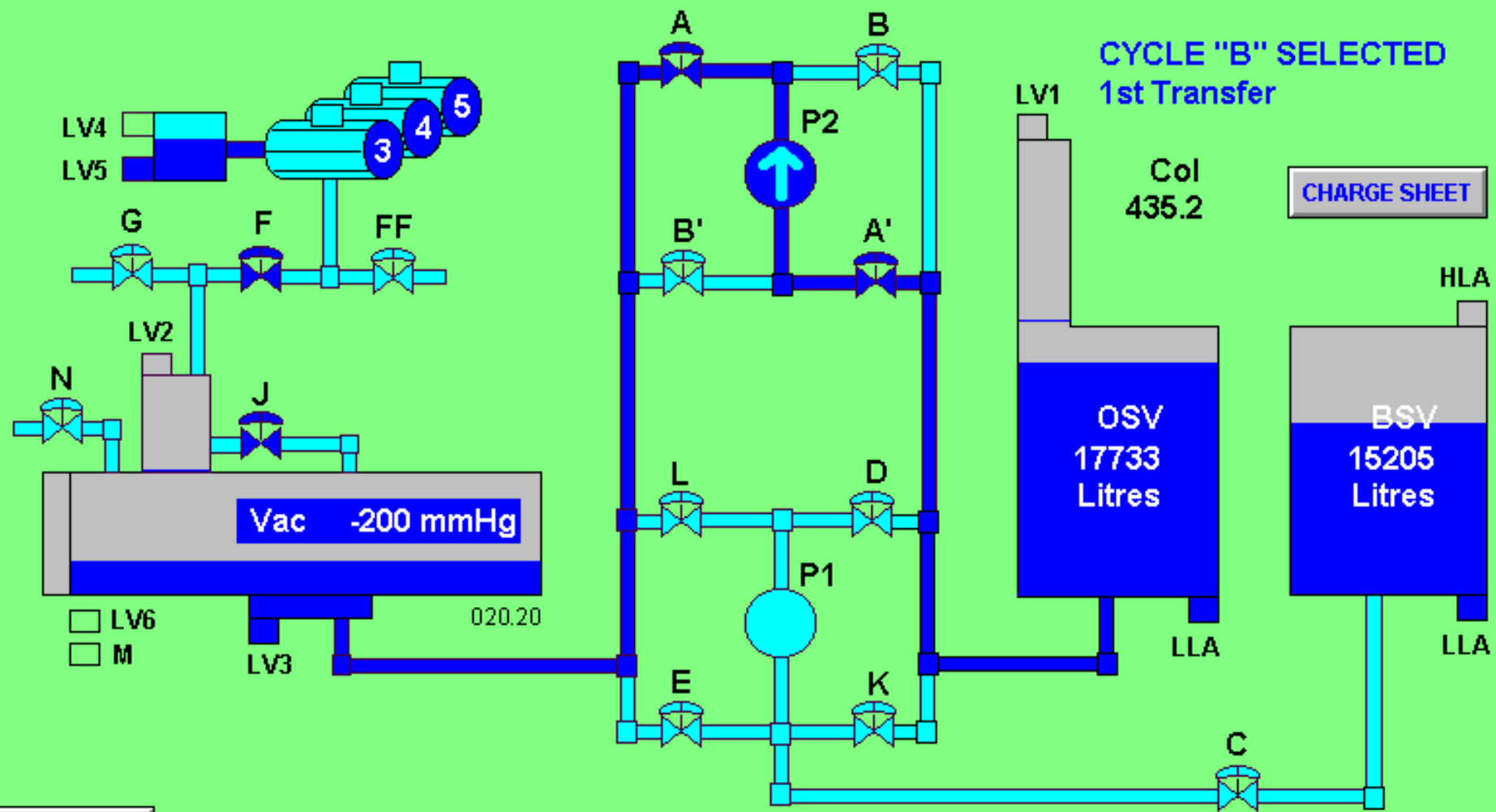


Stage 0:19
 Cycle 6:19
 15:24:44



PREVAC PROCESS

PREVAC TESİSİ İŞLEM ŞEMASI



Log Off

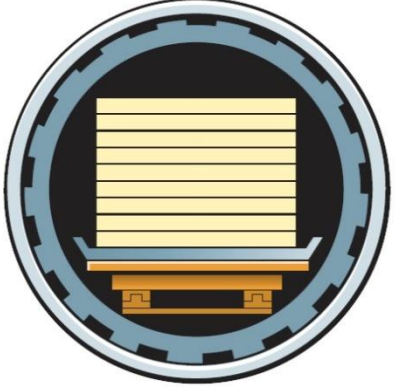
History

STATUS

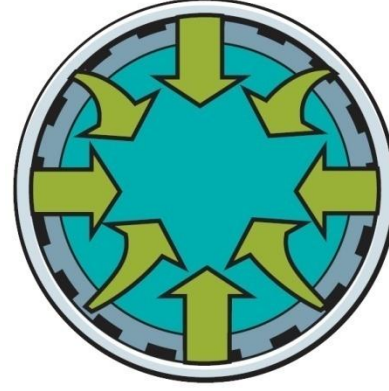
ABORT

BYPASS

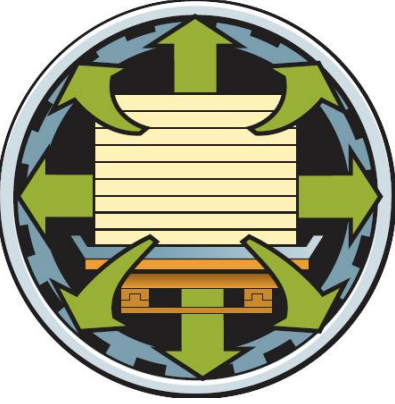
Önkoruma-Vakum basınç işlemi



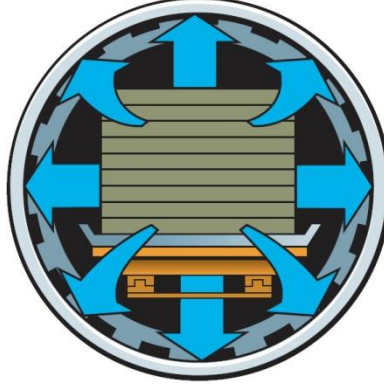
1. Kurutulmuş ve işlenmiş malzeme basınç silindrine konur



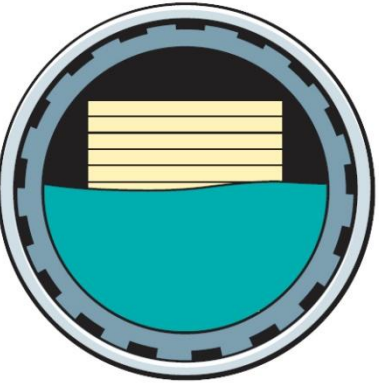
4. Hidrolik basınç uygulanır (12 at)



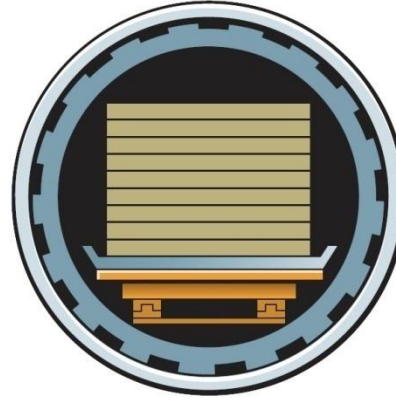
2. Vakum çekilir



5. Silindir boşaltılır



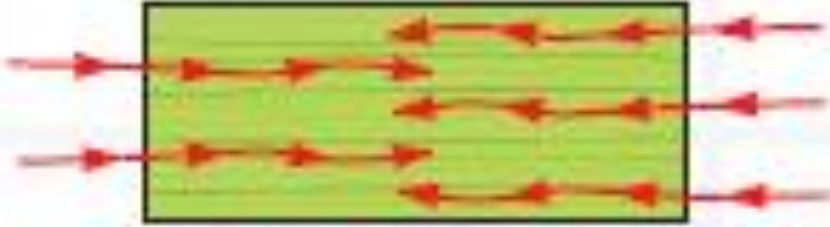
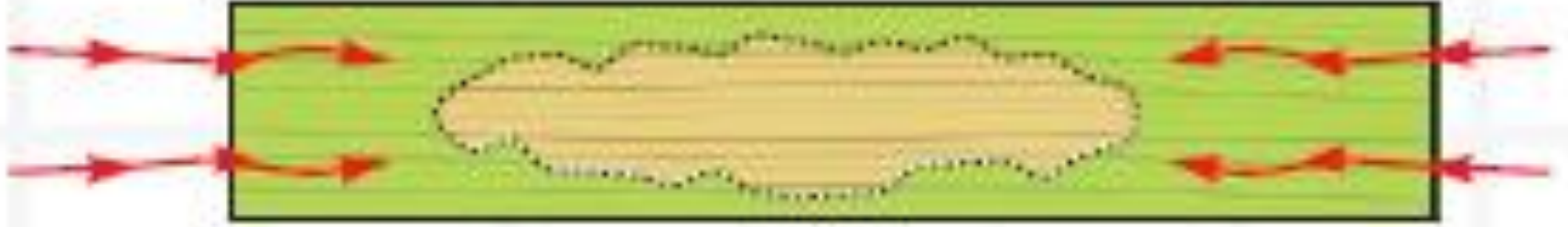
3. Silindir önkoruma maddesi ile doldurulur



6. Son vakum uygulanır

KİMYASAL KORUYUCUNUN AHŞABA EMDİRİLMESİNE ETKİ EDEN FAKTÖRLER

- **KORUYUCUNUN KİMYASAL YAPISI**
- **İŞLEM ŞARTLARI**
- **AĞACIN CİNSİ**
- **MALZEMENİN BOYUTLARI**
- **ÖZODUN/DİRİODUN ORANI**
- **NEM ORANI**

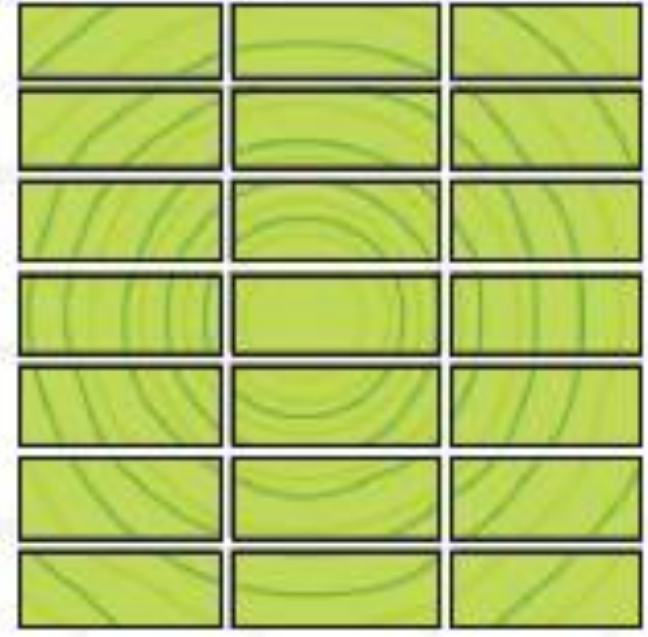


**AHŞAP MALZEMENİN BOYUNA YÖNDE
EMİCİLİĞİ DAHA FAZLADIR**

**KISA BOY MALZEME UZUN BOYA GÖRE M³
BAŞINA DAHA FAZLA ÇÖZELTİ EMER**



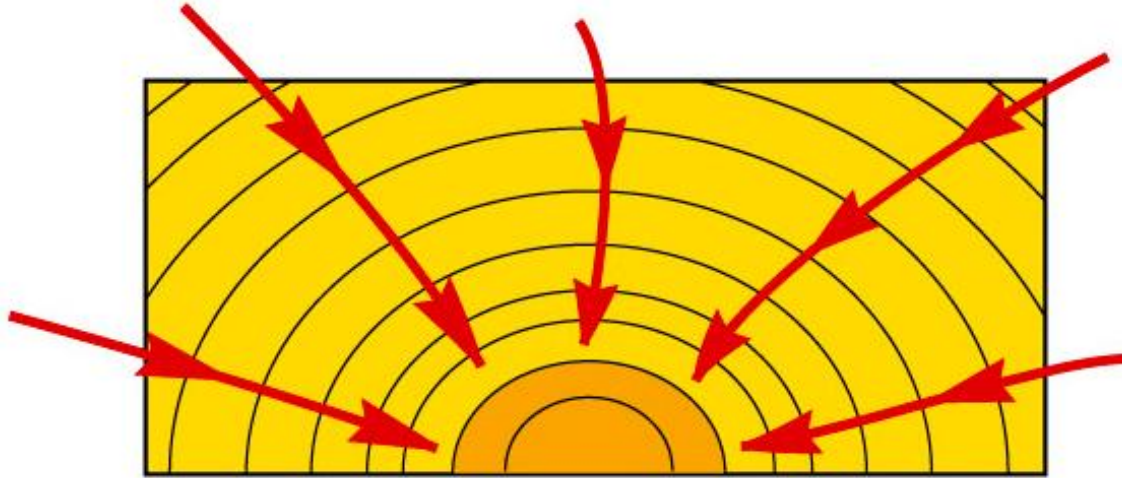
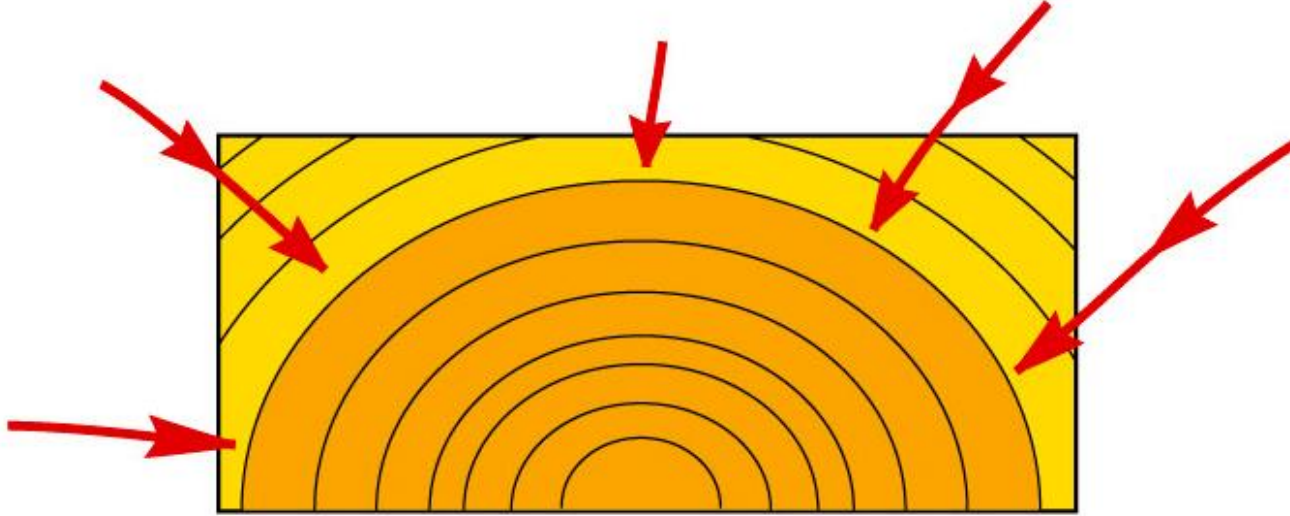
21x21 CM



3x7 CM

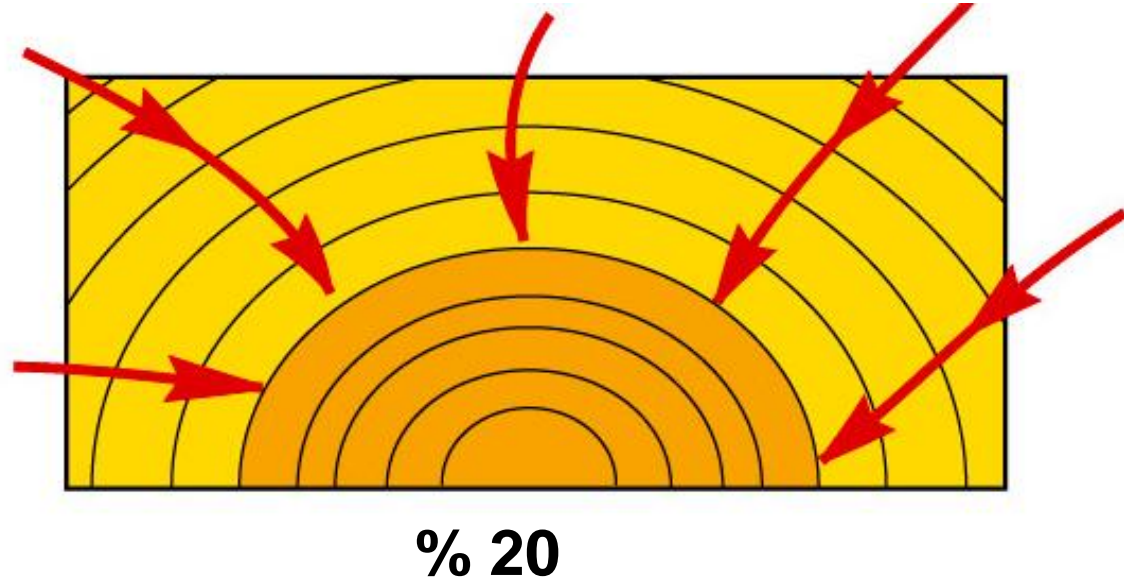
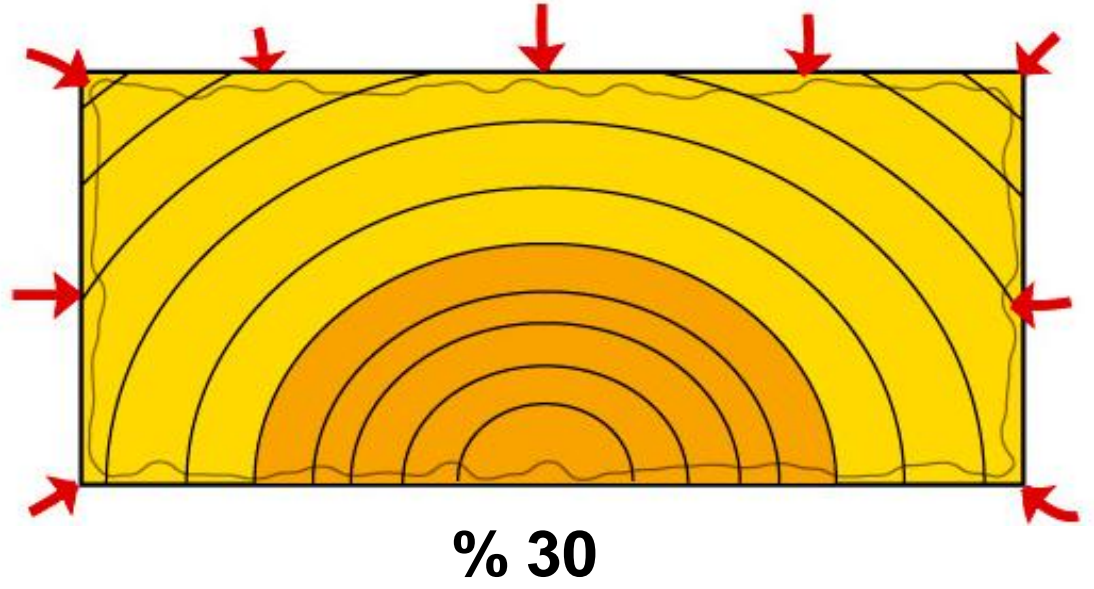
**ENİNE KESİT KÜÇÜLDÜKÇE DAHA FAZLA ÇÖZELTİ
EMİLİR**

DİRİ ODUN – ÖZ ODUN ORANI DA EMİLEN ÇÖZELTİ MİKTARINI ETKİLER

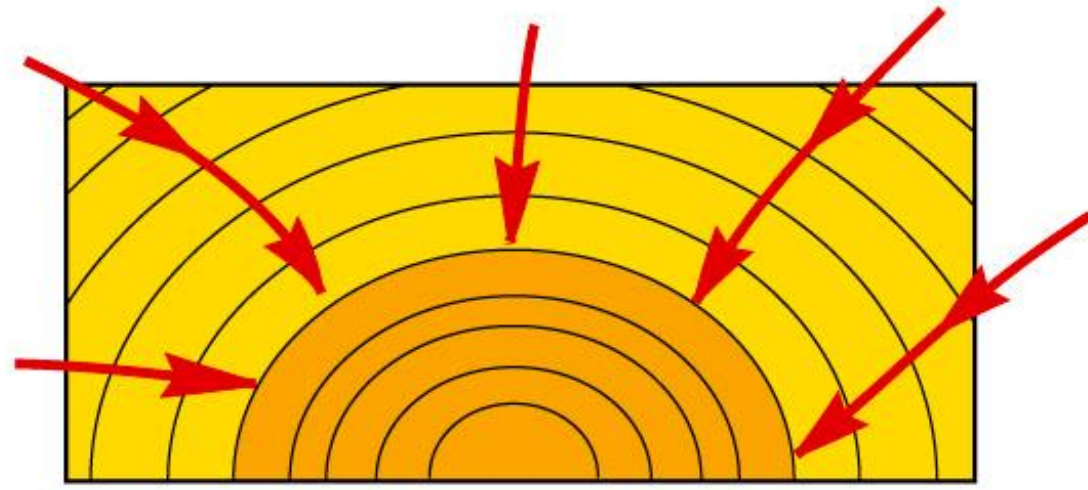


**AHŞABIN NEM
ORANI:**

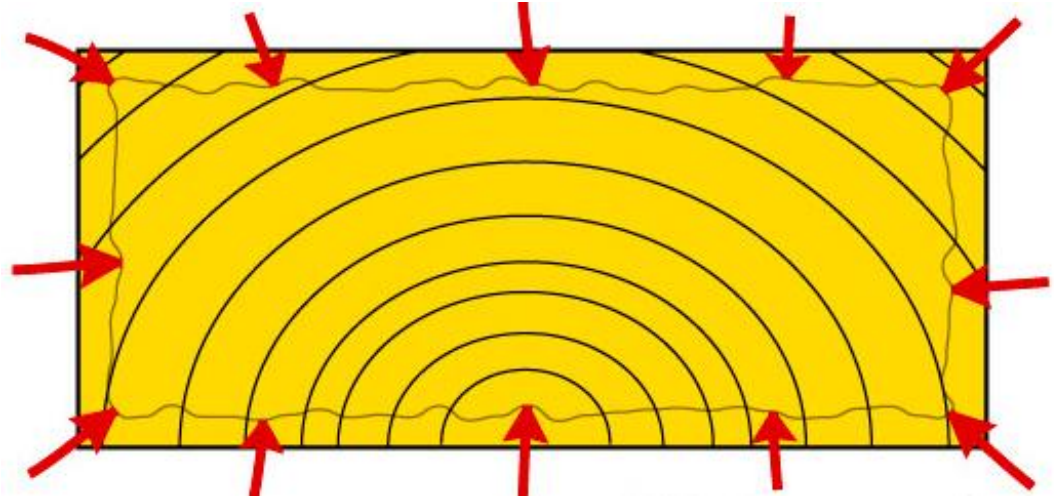
**% 28 İN ALTINDA
OLMALI**



**AĞAÇ CİNSİNE
GÖRE
EMDİRİLEBİLEN
ÇÖELTİ MİKTARI**



SARI, KIZIL, KARA ÇAM



GÖKNAR - LADİN



**SABİT TESİSTE
UYGULAMA**



**DALDIRMA
UYGULAMASI**

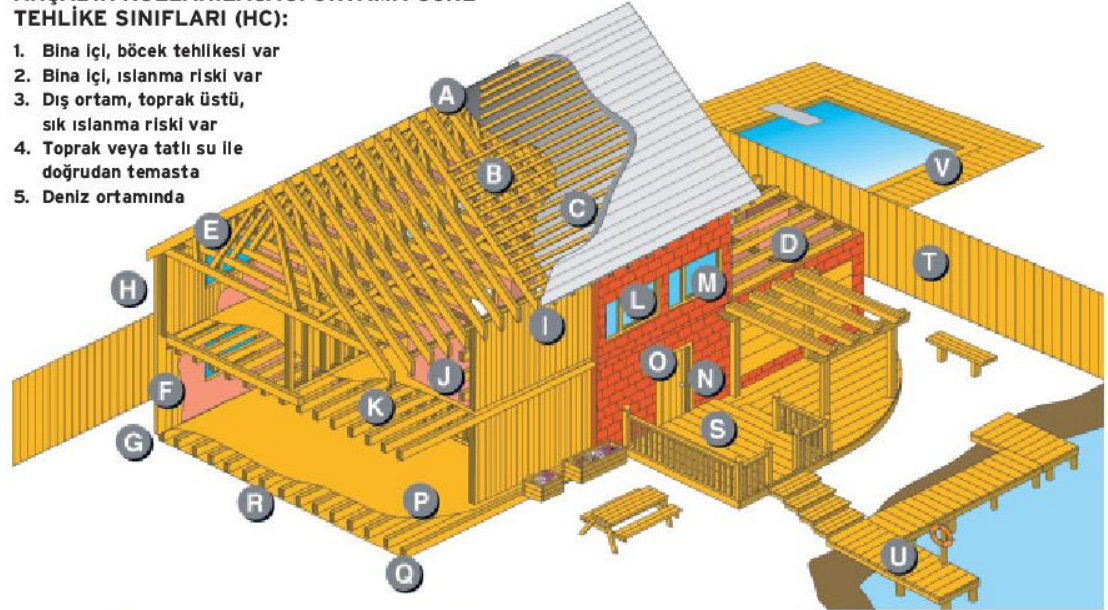
NEREDE
KULLANILACAK?
BEKLENEN HİZMET
ÖMRÜ?
AĞAÇ TÜRÜ?
◆
HANGİ KORUYUCU?
NASIL?
NE KADAR?

ŞARTNAME REHBERİ: NEREDE HANGİ ÖN KORUMA SİSTEMİ KULLANILIR?

Bir ahşap eleman için doğru önkoruma işlemini belirlerken, ahşabın kullanılacağı ortam, ağaç cinsi ve beklenen hizmet ömrü dikkate alınmalıdır.

AHŞABIN KULLANILACAĞI ORTAMA GÖRE TEHLİKE SINIFLARI (HC):

1. Bina içi, böcek tehlikesi var
2. Bina içi, ıslanma riski var
3. Dış ortam, toprak üstü, sık ıslanma riski var
4. Toprak veya tatlı su ile doğrudan temasta
5. Deniz ortamında



◆ BU SORULARIN CEVAPLARI, DAHA DETAYLI BİLGİ, VE “ÖN KORUMA ÇÖZÜMLERİ” BROŞÜRÜ www.ahsap.com DA BULUNMAKTADIR

**ÖNKORUMA
MADDESİNİN
ÜZERİNDE
ÜRÜNÜN
AKTİV
MADDELERİ
VE ONAY
BİLGİLERİ
OLMALIDIR.**



Belli aralıklarla önkoruma çözeltilisinin özgül ağırlığı ölçülür



Hidrometreler:

**Çözeltinin özgül
ağırlığını ölçme
aletleri**



Osmose, Marlow –Araştırma laboratuvarı



Osmose, Marlow, Kimya laboratuari



KİMYASAL KORUMA

ÖNKORUMA = EMPRENYE

AHŞAP KORUMA, KİMYASAL KORUMA, EMPRENYE



**AHŞABI ÇÜRÜMEYE VE BÖCEK HASARINA KARŞI
KORUR**



**AHŞAP MALZEME YERİNE MONTE EDİLMEDEN ÖNCE
YAPILIR**



**ÖNKORUMA İŞLEMİNDEN GEÇMİŞ OLAN AHŞAP
HİZMET ÖMRÜ BELLİ OLAN BİR MÜHENDİSLİK
MALZEMESİDİR**

YÜZEY KORUMA



NEYİ?

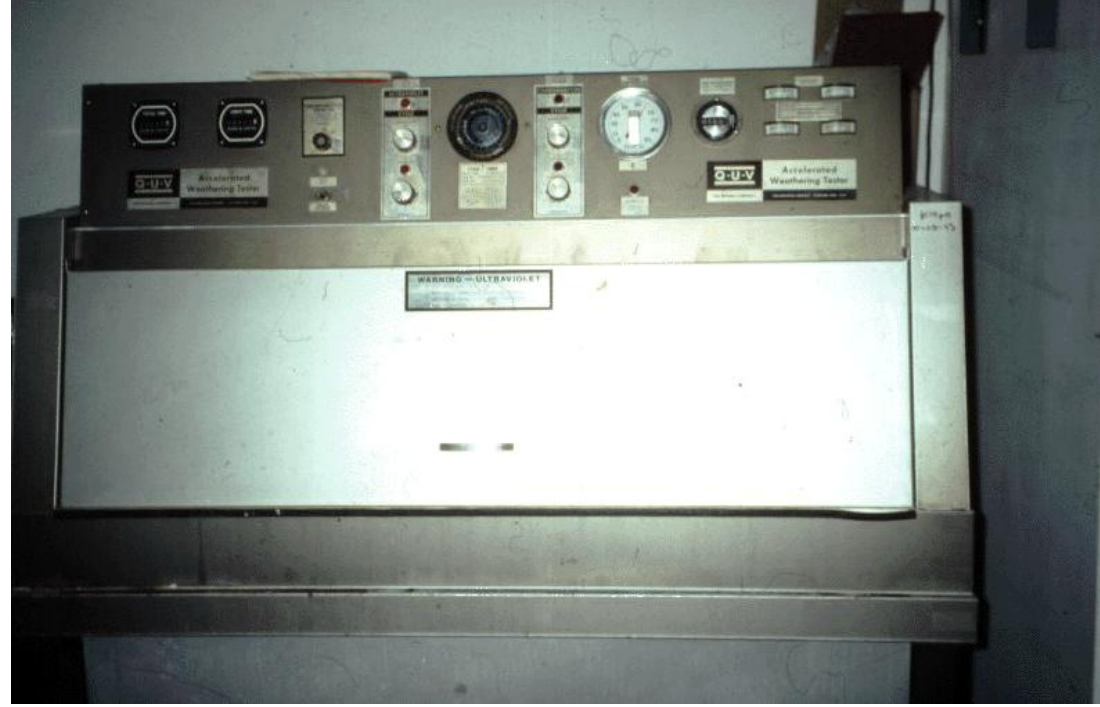
NEDEN?

NE İLE?



BOYA ÖMRÜ DENEYLERİ:

HIZLANDIRILMIŞ
DENEY KABİNİ

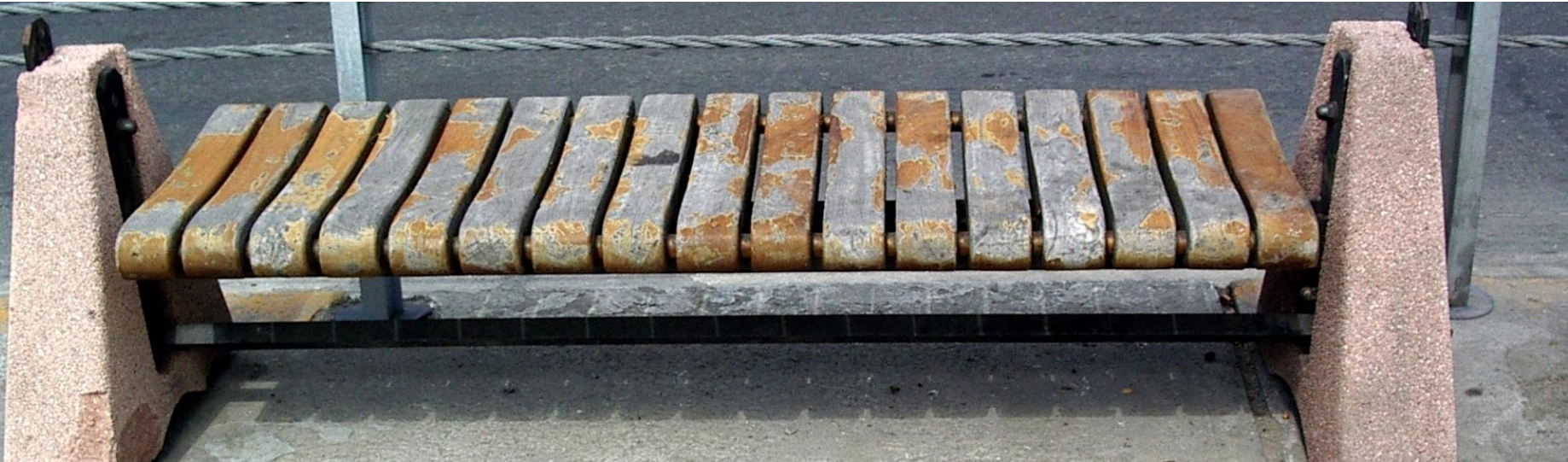


ARAZİ
DENEYLERİ



ŞEFFAF VERNİKLER GÜNEŞ IŞINLARINA DAYANMAZ !

Yarı şeffaf özel ahşap Boyaları metal oksit Pigmentler içerir, reçinenin bozulmasını engeller



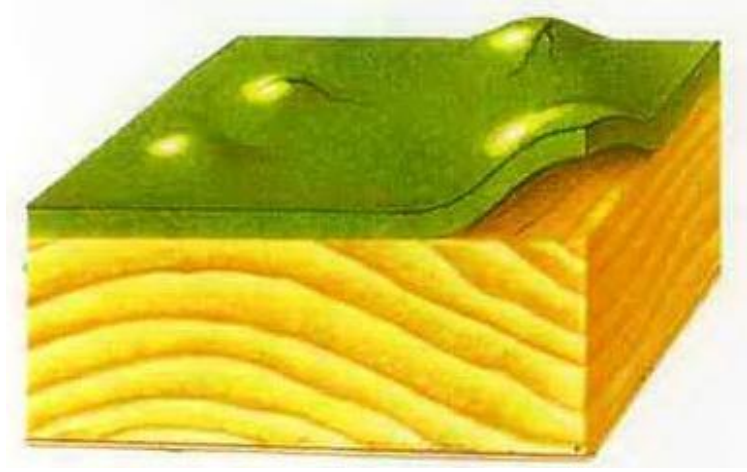
YAĞLIBOYA VE MACUN:

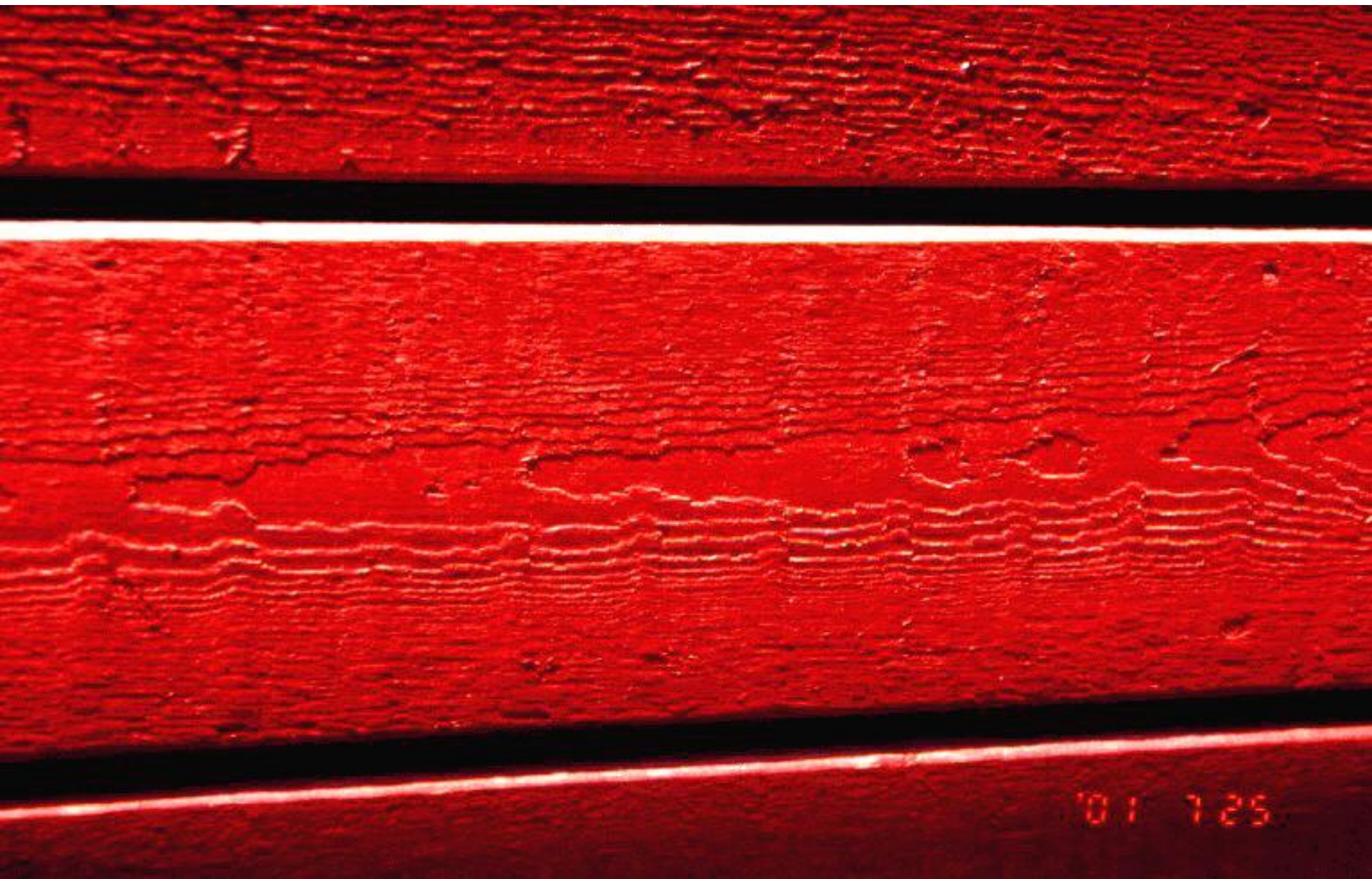


Yapı dışında kullanılacak olan ahşap üzerine kesinlikle macun uygulanmamalı ve sadece su buharı geçirgenliği yüksek olan boyalar kullanılmalıdır

ÖZEL AHŞAP BOYALARI:

- Ahşaba nüfuz eder
- Suyu geçirmez
- Su buharını geçirir
- Ultra viyole ışınlarına dayanıklıdır





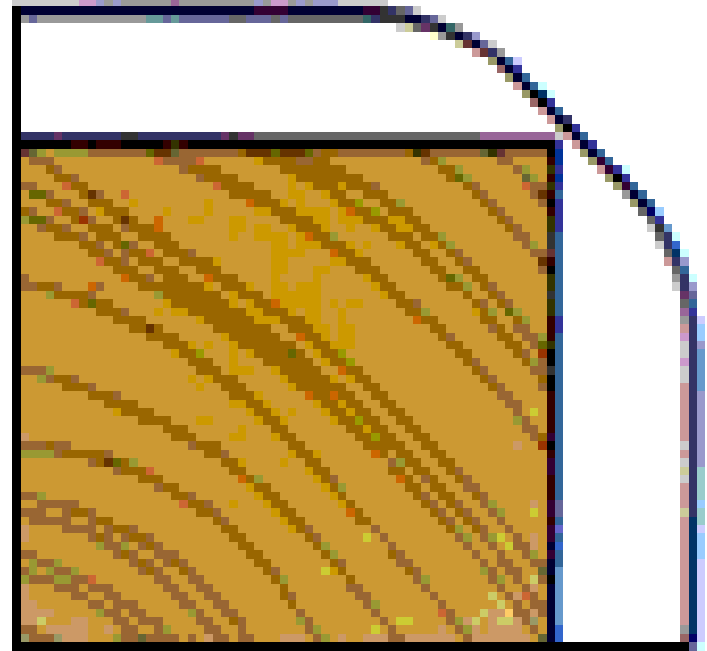
Yüzey ne kadar pütürlü ise boya ömrü de o kadar uzundur

SİVRİ KÖŞELERE DİKKAT!

Boyayı çabuk aşındırmaması için doğru kesim yapılmalıdır

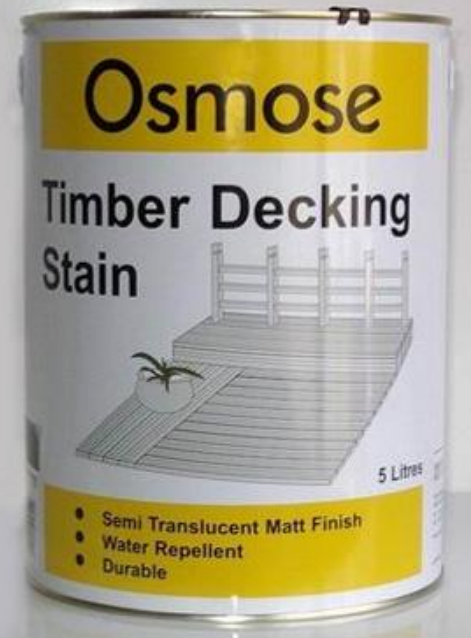


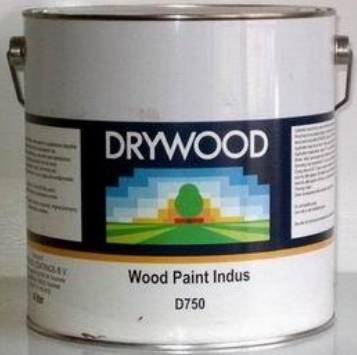
Doğru



Yanlış

ÖZEL AHŞAP BOYALARI





SU ESASLI UYGULAMA: PİSTOLE

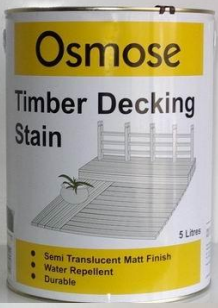




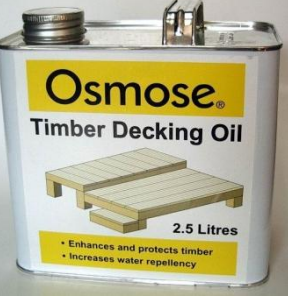
**ARCHITECTURAL,
11 YIL SONRA**



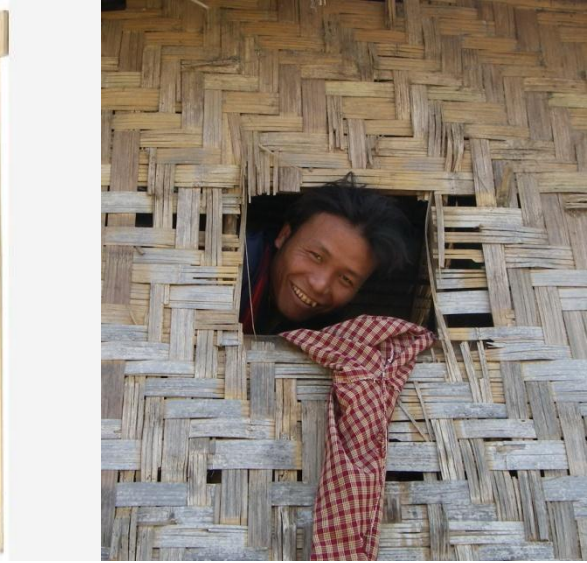
16 yıl



BİNA DIŐINDAKİ AHŐAP ZEMİNLER İÇİN



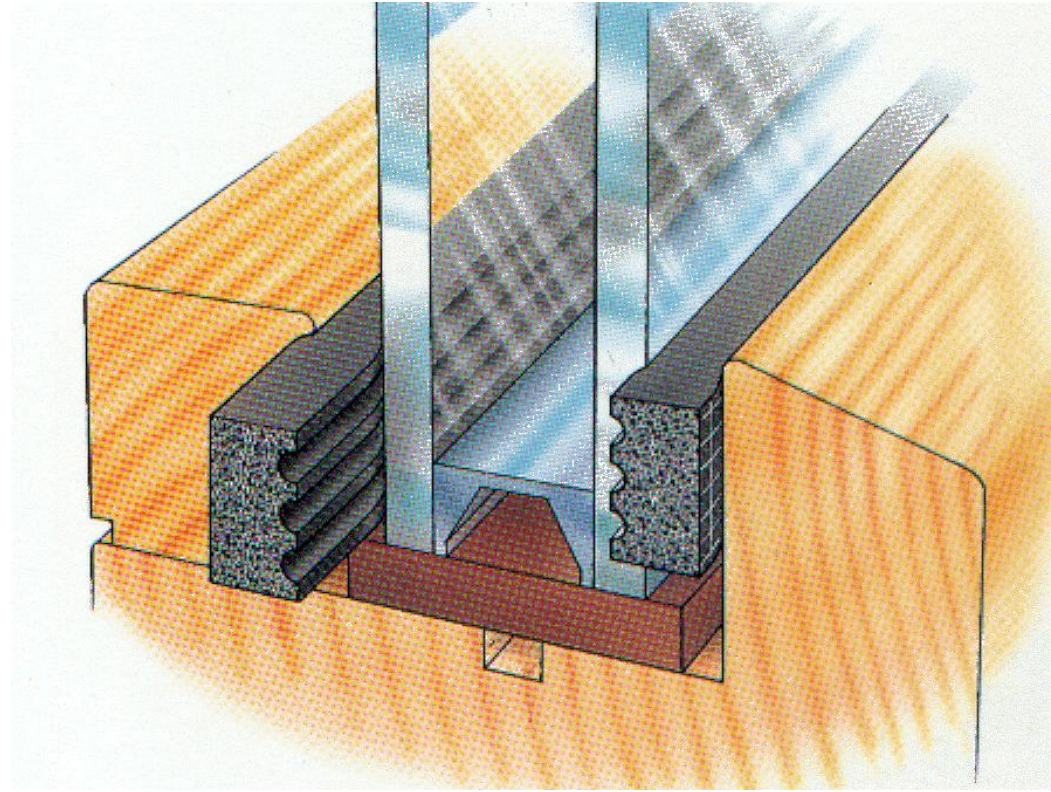
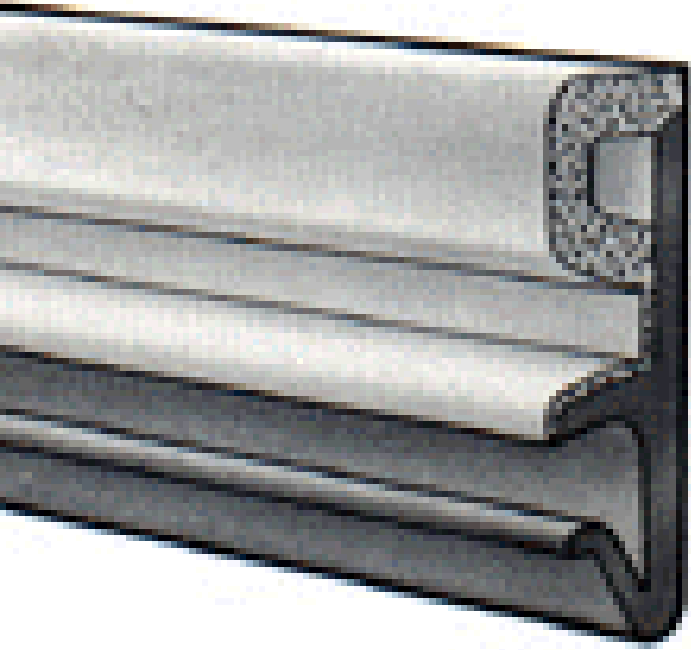
AHŞAP PENCERELERİNİZ İÇİN





TRELLEBORG
BUILDING SYSTEMS

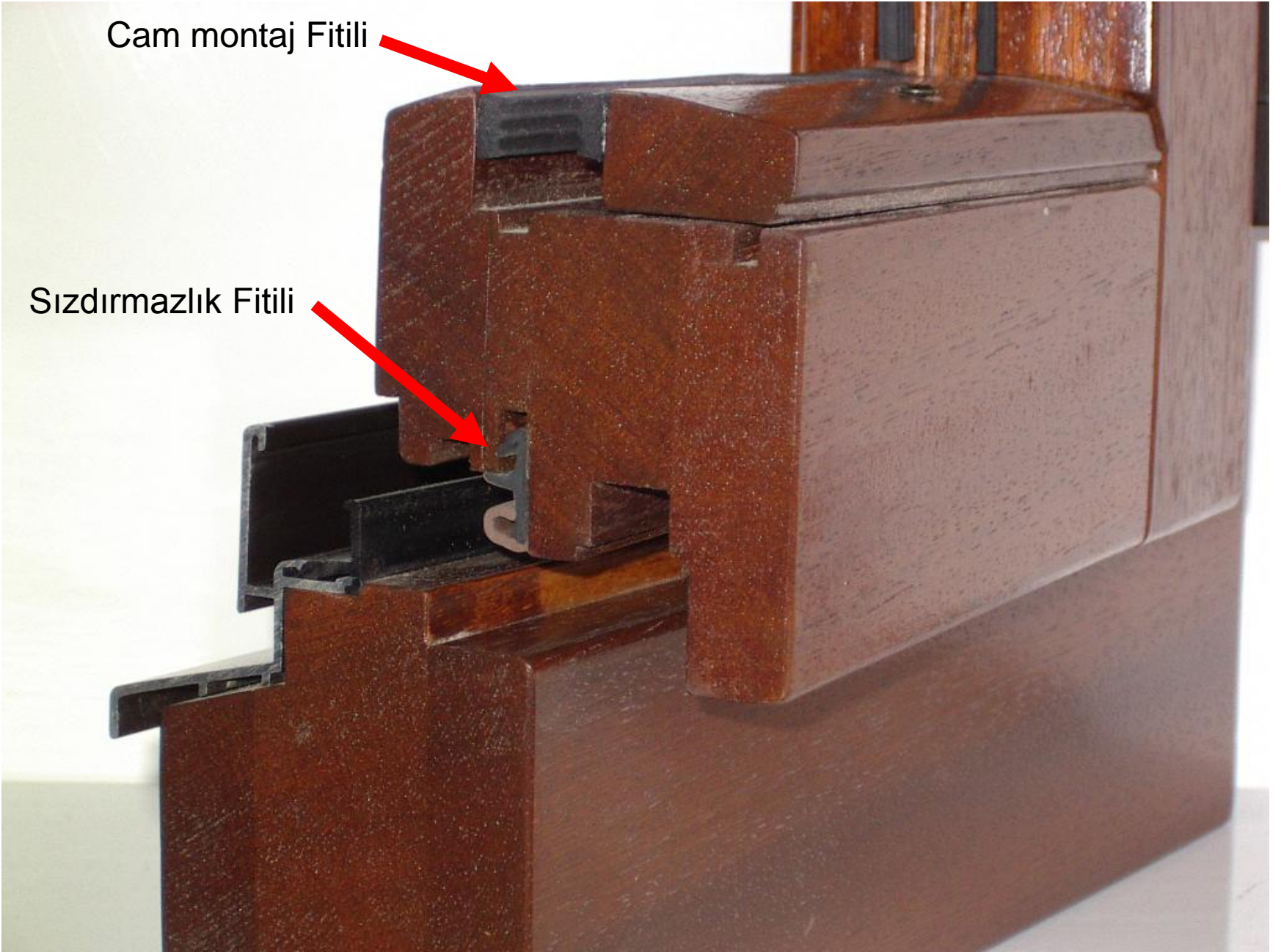
Sızdırmazlık ve cam montaj fitilleri

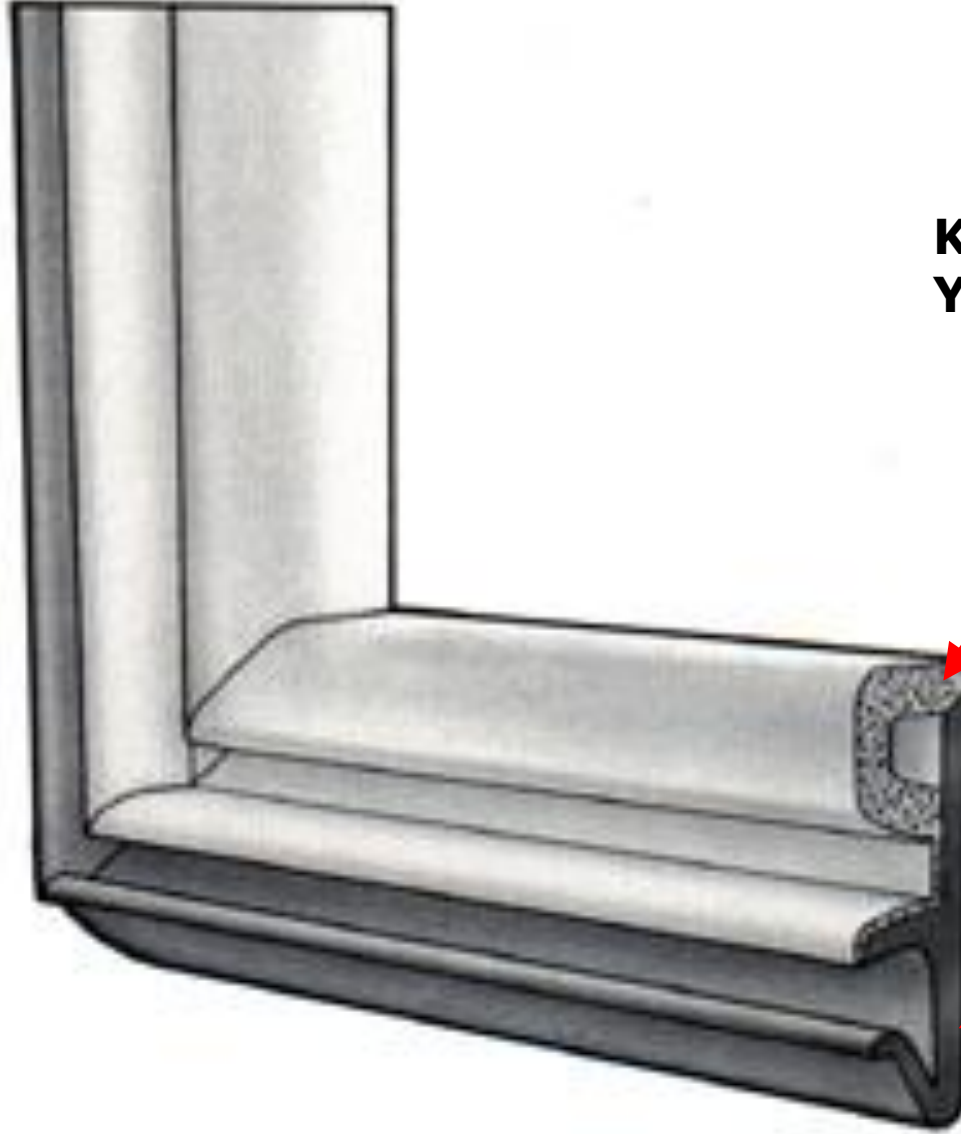


Cam montaj Fitili



Sızdırmazlık Fitili





**KAPALI GÖZENEKLİ,
YUMUŞAK EPDM**

SERT EPDM



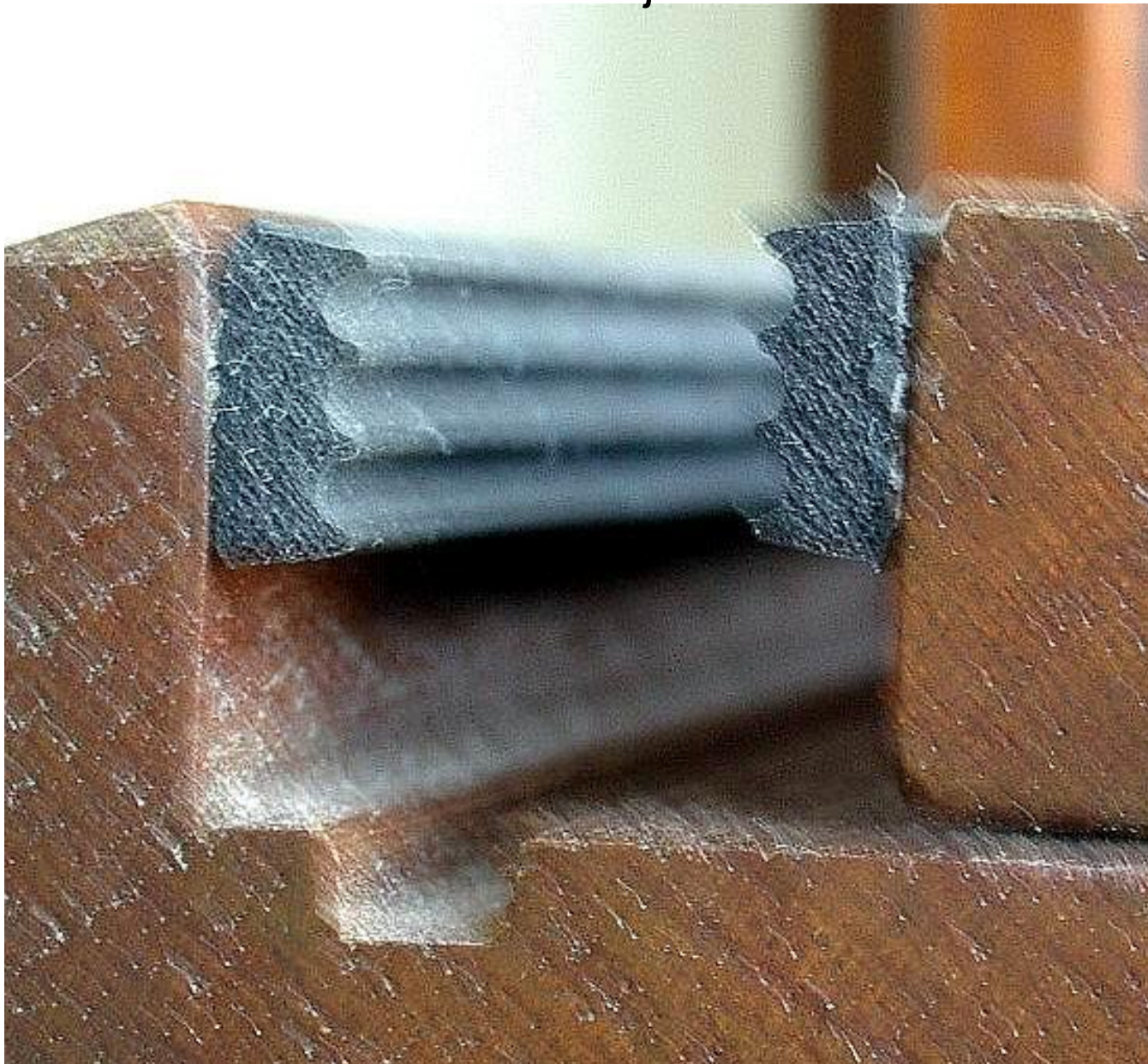
CAM MONTAJ FİTİLLERİ



TRELLEBORG
BUILDING SYSTEMS



9x4 cam montaj fitili



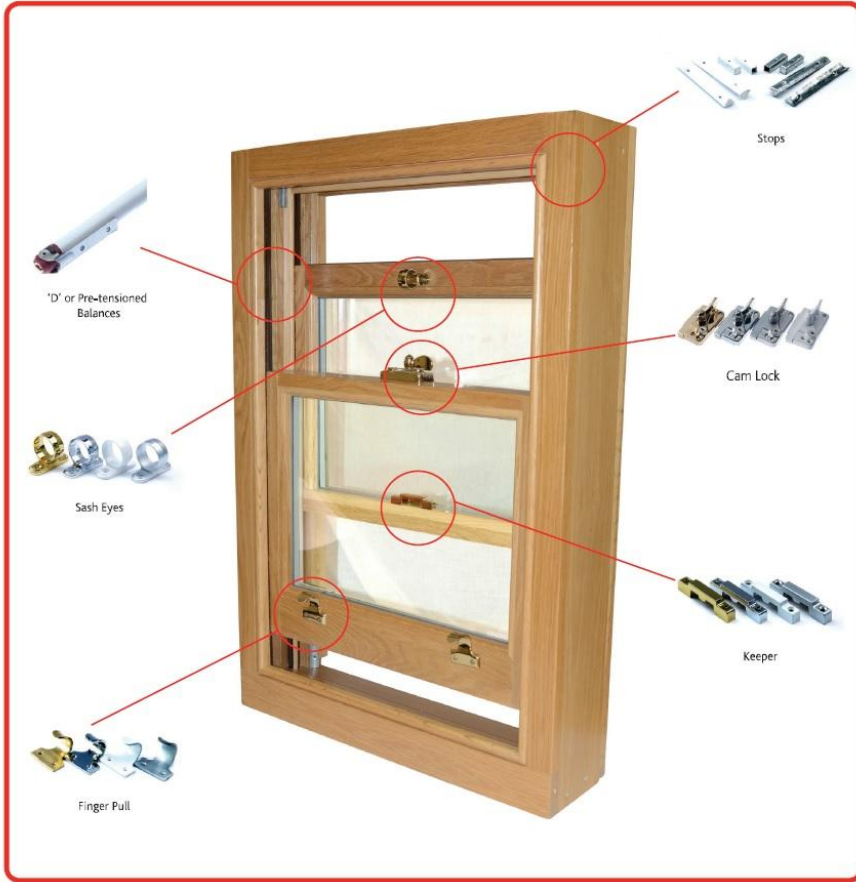


GİYOTİN PENCERELER İÇİN...



balanceuk

GIYOTİN PENCERE MEKANİZMALARI



GİYOTİN PENCERE AKSESUARLARI



**HİÇBİR KİMYASAL VE
KORUYUCU**

**DOĞRU TASARIMIN
ALTERNATİFİ DEĞİLDİR**